



# INDOFINE Chemical Company, Inc.

121 Stryker Lane, Bldg. 30, Suite 1 • Hillsborough, NJ 08844 • U.S.A.

Phone: (908) 359-6778 • FAX: (908) 359-1179

website: [www.indofinechemical.com](http://www.indofinechemical.com)

e-mail: [chemical@indofinechemical.com](mailto:chemical@indofinechemical.com)

## CERTIFICATE OF ANALYSIS

Catalog Number: 020981S

Product Name: **EPIGALLOCATECHIN GALLATE**  
(EGCG; Epigallocatechin-3-O-gallate; Teatannin II)

CAS Number: [989-51-5]

Lot Number: 2209703

Chemical Formula: C<sub>22</sub>H<sub>18</sub>O<sub>11</sub>

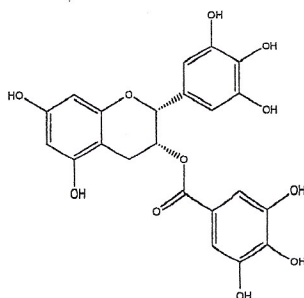
Molecular Weight: 458.37

Appearance: Off-white powder

Loss on drying: 1.8%

Storage: Store at 2-8°C. Protect from light.

Purity(HPLC): 98.81%



Prepared by:  
*Ramesh Mandadi*  
Ramesh Mandadi  
Director of Operations

Reviewed and Approved by:  
*Sujata Moton*  
Sujata Moton  
VP



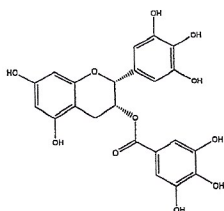
# INDOFINE Chemical Company, Inc.

121 Stryker Lane, Bldg. 30, Suite 1 • Hillsborough, NJ 08844 • U.S.A.

Phone: (908) 359-6778 • FAX: (908) 359-1179

website: [www.indofinechemical.com](http://www.indofinechemical.com)

e-mail: [chemical@indofinechemical.com](mailto:chemical@indofinechemical.com)



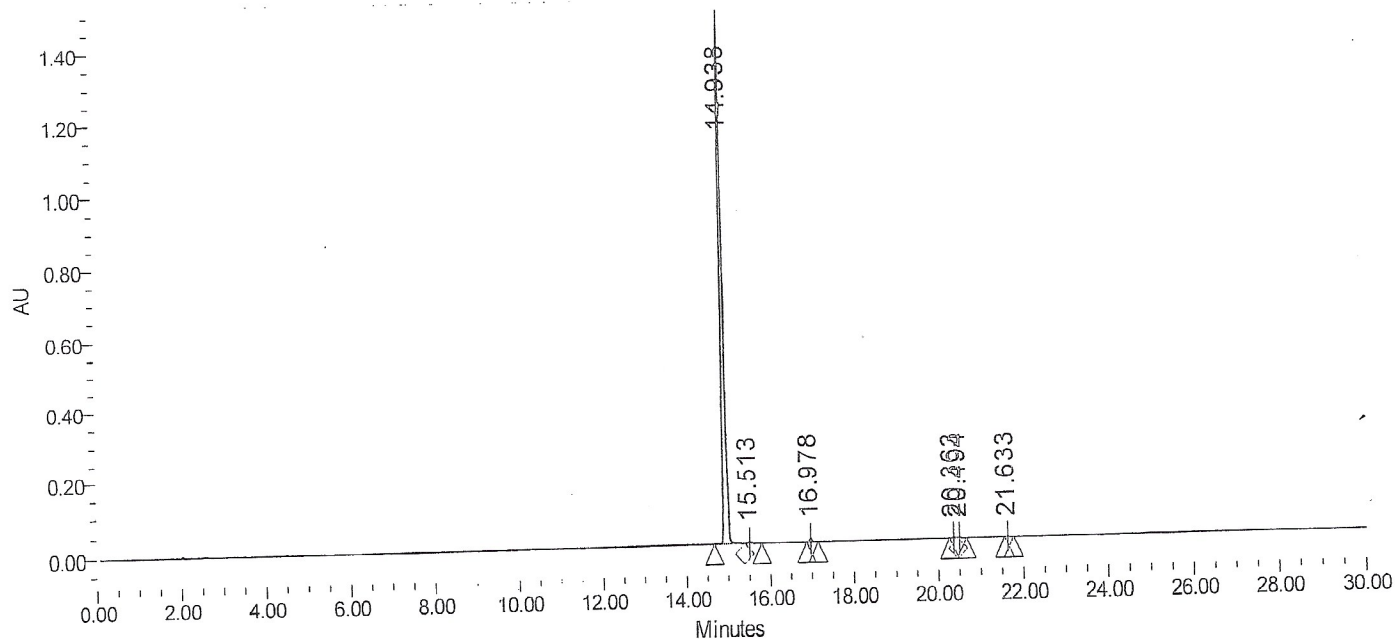
## HPLC ANALYSIS

Catalog No.: 020981S  
Product Name: Epigallocatechin gallate  
Lot No.: 2209703

### SAMPLE INFORMATION

Sample Name:	Epigallocatechin gallate	Acquired By:	
Sample Type:	Unknown	Sample Set Name	
Vial:	25	Acq. Method Set:	Epigallocatechin gallate
Injection #:	1	Processing Method	sample
Injection Volume:	5.00 ul	Channel Name:	PDA Ch1 278nm@4.8nm
Run Time:	30.0 Minutes	Proc. Chnl. Descr.:	PDA Ch1 278nm@4.8nm

Auto-Scaled Chromatogram



Peak Results

Name	RT	Area	% Area	Height (μV)	USP Plate Count	USP Resolution
1	14.938	5844169	98.81	1452503	325013.81	
2	15.513	18982	0.32	3820	365690.60	5.37
3	16.978	33233	0.56	8894	484014.81	14.14
4	20.363	9676	0.16	1617	240836.59	23.63
5	20.494	3975	0.07	802		0.70
6	21.633	4676	0.08	1188	739637.52	7.82